

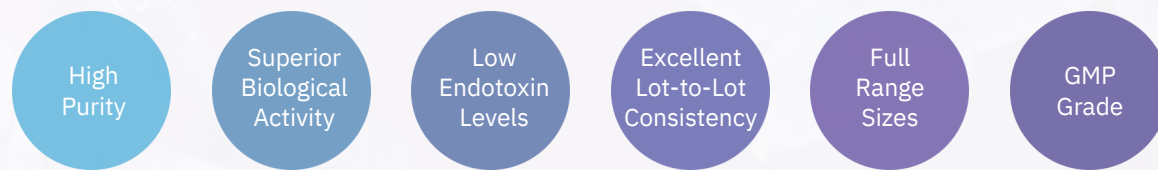


# Recombinant Proteins

Recombinant proteins are widely applied in cell culture, structure and function analysis, immunology assays, antibody production, and in vitro biochemical analysis, etc.

MedChemExpress provides a catalog of **10,000+** recombinant proteins and customized services, supporting scientific research.

## Advantages



## Product Categories

### Cytokines and Growth Factors

EGF, bFGF, IL-6, M-CSF, TNF- $\alpha$ , TGF- $\beta$ , IFN- $\gamma$ , Activin A, BMPs, etc.

### Immune Checkpoint Proteins

PD-1, PD-L1, CD40L, CTLA-4, TIM-3, ICOS, etc.

### Receptor Proteins

EGFR, HER2, VEGFR, IL-6R, AGER, LDLR, ROR1, GPCR, etc.

### CAR-T related Proteins

Siglec-2, CD19, CD20, CD38, EpCAM, NKG2D, 4-1BBL, etc.

### Enzymes & Regulators

MMPs, Caspases, cGAS, HDACs, Legumain, Granzyme B, etc.

### CD Antigens

CD7, CD9, CD14, CD19, CD24, CD28, CD36, CD44, etc.

### Complement System Related Proteins

C2, C3a, C5a, CFH, DAF, CFHR1, C1qR1, MASP1, C1QBP, CFB, etc.

### Fc Receptor Proteins

Fc gamma RIII, Fc gamma RII, Fc-gamma Receptor I, FcRn, etc.

### Ubiquitin Related Proteins

Ubiquitin/UBLs, Ubiquitin Enzymes, Deubiquitinases

### GMP-grade Proteins

GMP EGF, TNF-alpha, Fibronectin,

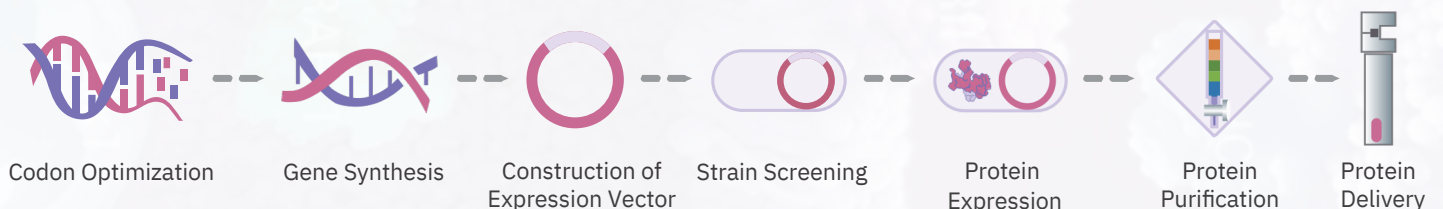
### Animal-free Recombinant Proteins

AF EGF, IL-4, IFN- $\gamma$ , IL-2, etc.

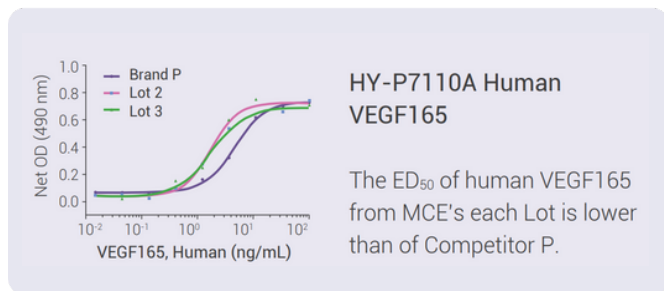
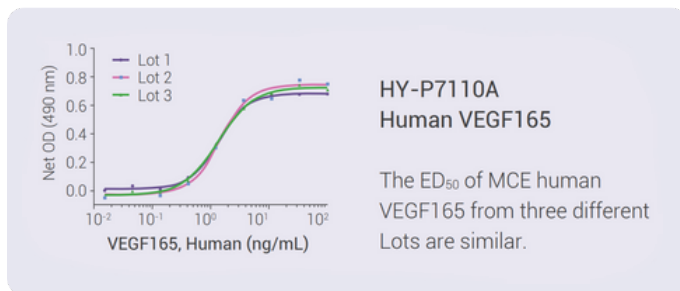
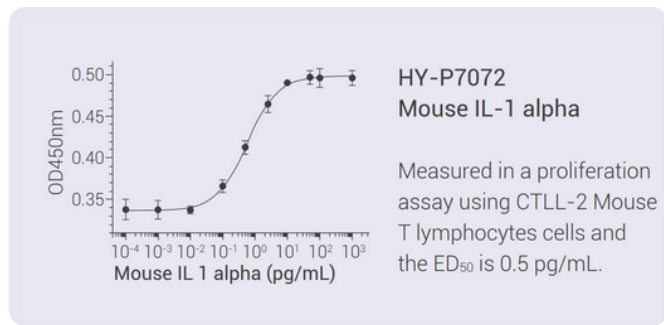
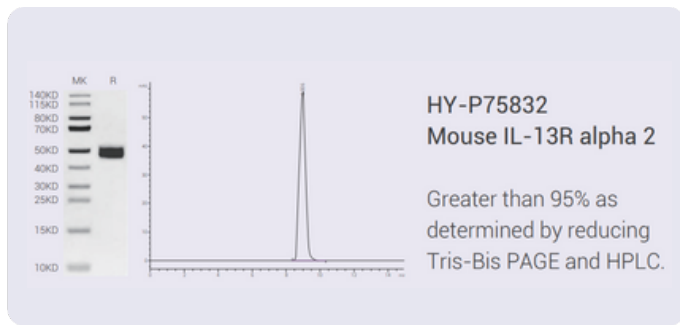
### Fluorescent-labeled/ Biotinylated Proteins

Biotinylated CD28, FITC-NKG2D, etc.

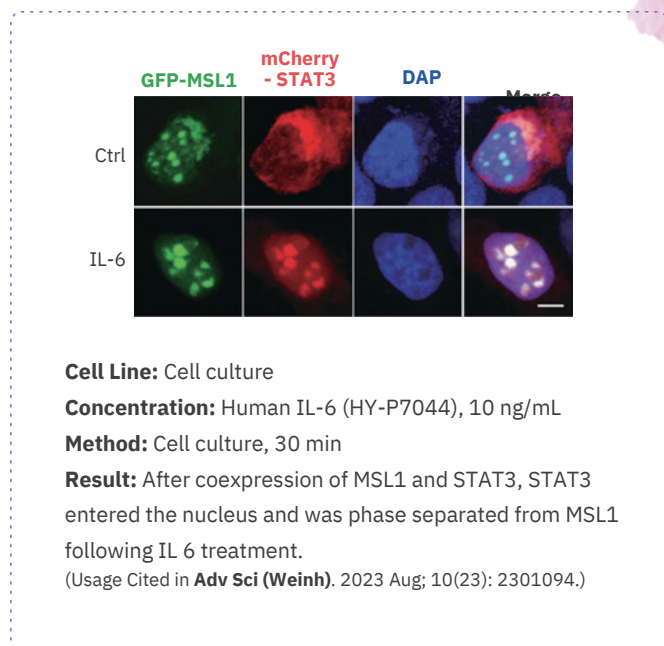
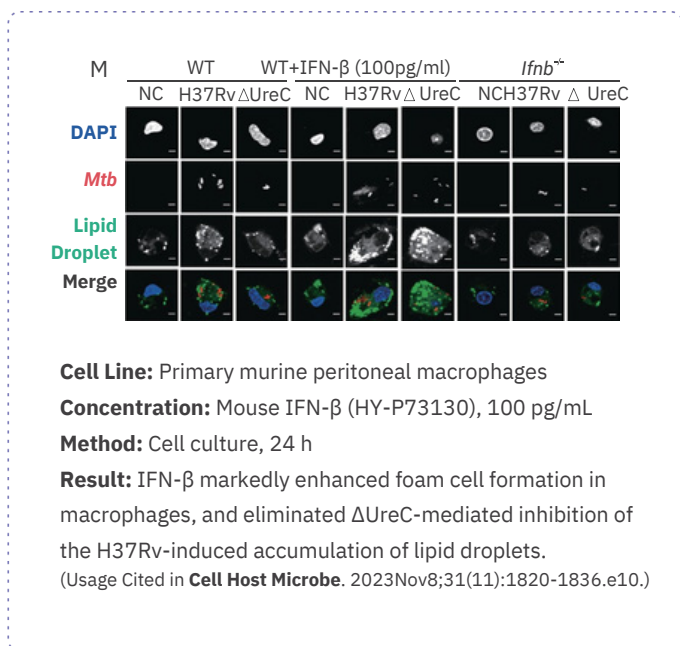
## Recombinant Protein Expression Service



## Activity Verification



## Customer Validation



## Selected Publications Citing Use of MCE Proteins

- Cell.** 2024 Apr 25;187(9):2288-2304.e27.    **Immunity.** 2024 Mar 12;57(3):495-512.e11    **Sci Adv.** 2023 Aug 25;9(34):eadh2501.  
**Adv Mater.** 2024 Feb 1:e2311964.    **Nat Genet.** 2024 Jan 24.    **Crit Care.** 2023 May 22;27(1):196.  
**Cancer Cell.** 2024 Apr 8;42(4):682-700.e12.    **Cell Rep Med.** 2023 Aug 25;10:1177.    **Sci Adv.** 2023 Aug 25;9(34):eadh2501.

